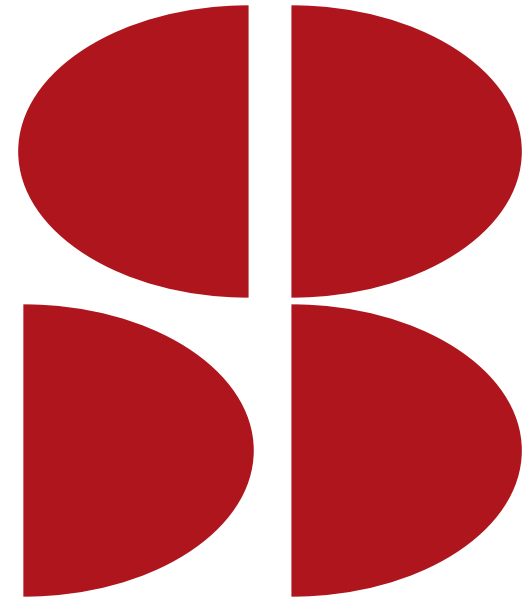




tortuga
DESIGN



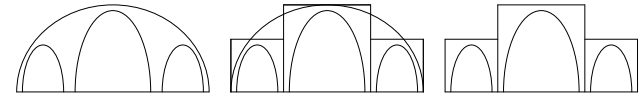
tortuga

SITZBRÜCKE

THE GARDEN AND THE COLLECTIVE IMAGINATION



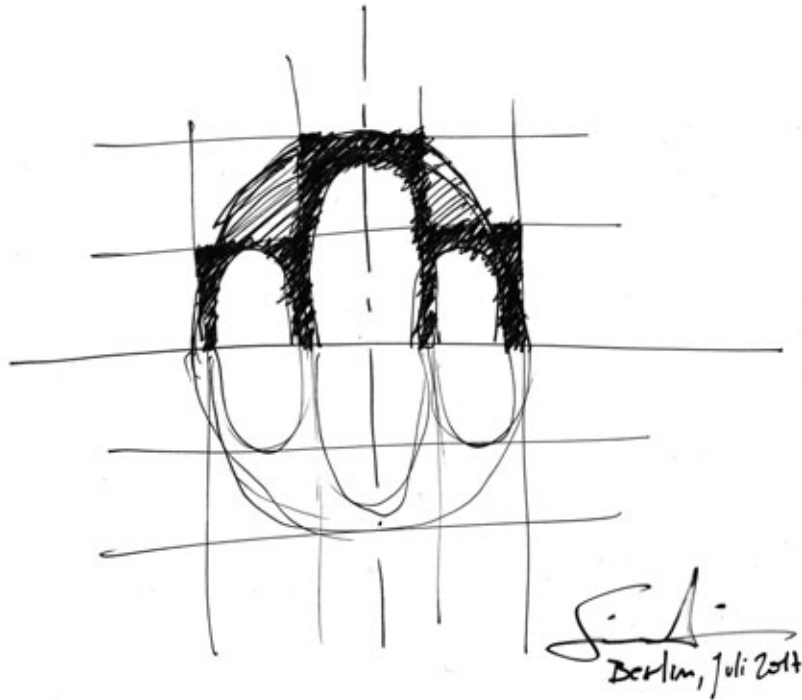
Transformation



The use of stone determines the geometry

SITZBRÜCKE

THE GARDEN AND THE COLLECTIVE IMAGINATION



A composition of objects suggests forms belonging to another constructive dimension. The use of stone determines the geometry, almost like a bridge with its arches, or a basilica with its aisles. The garden is projected into a rural dimension, belonging to the collective imagination in which the stone bridge, connecting two banks, becomes the meeting place between two counterparts in domestic life. The basilica multiplies its form.

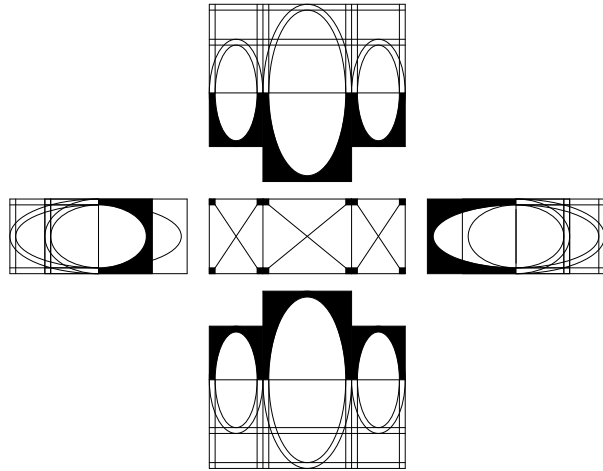
DESIGNER
Simone Boldrin

PRODUCTION
M&R di Masutti & Rusalen s.n.c., San Giovanni di Polcenigo IT
General Marmi srl, Pieve di Soligo IT

TECHNOLOGY
Helios Automazioni

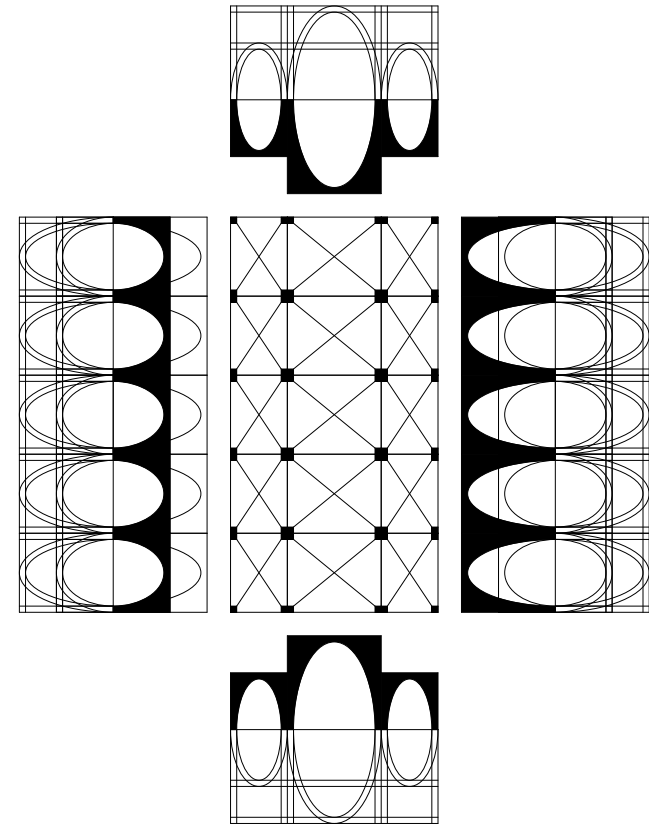
MATERIAL
Apricena stone, Biancone

Bridge



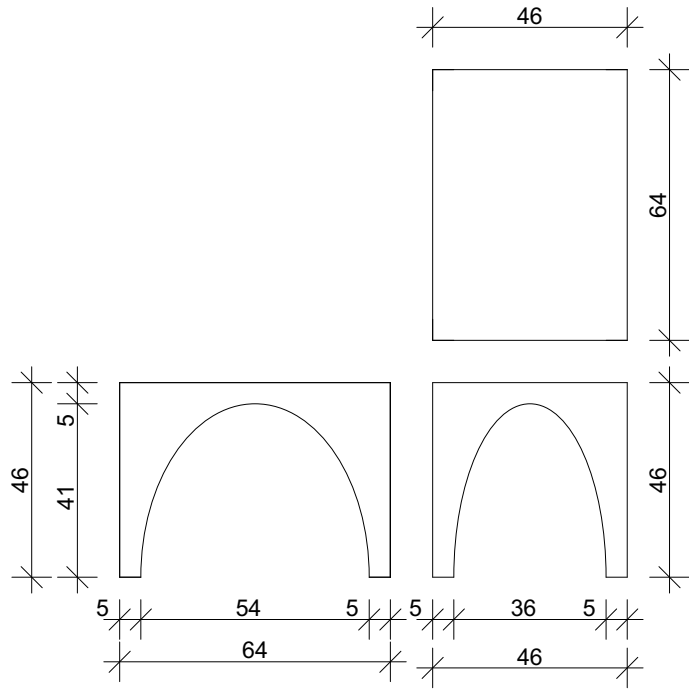
The connection of two banks, the meeting place between two counterparts

Basilica

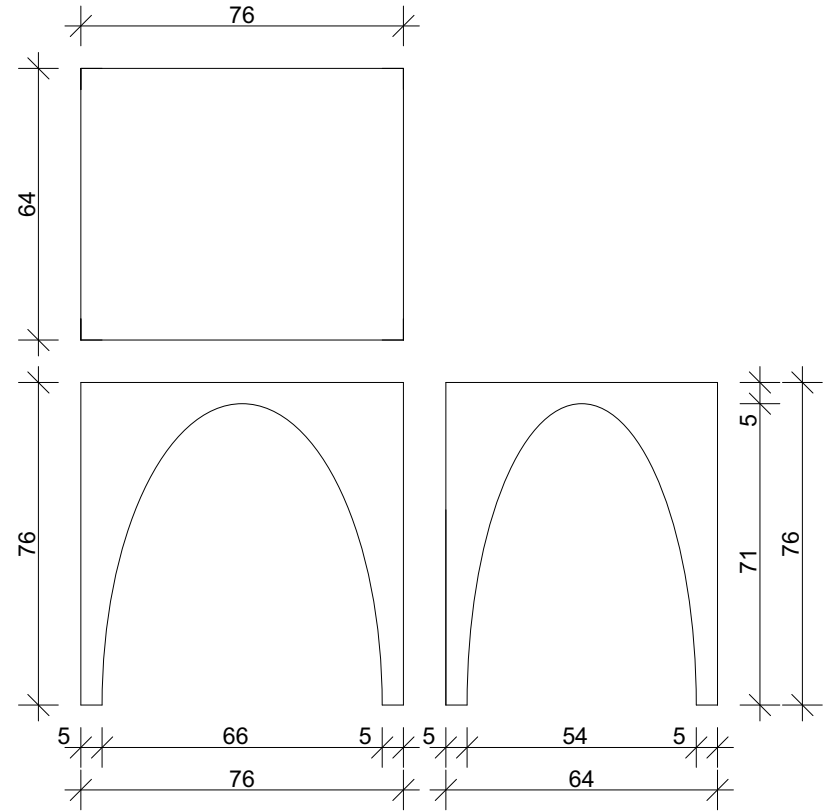


The basilica multiplies its form, the repetition creates a banquet

Chair



Table





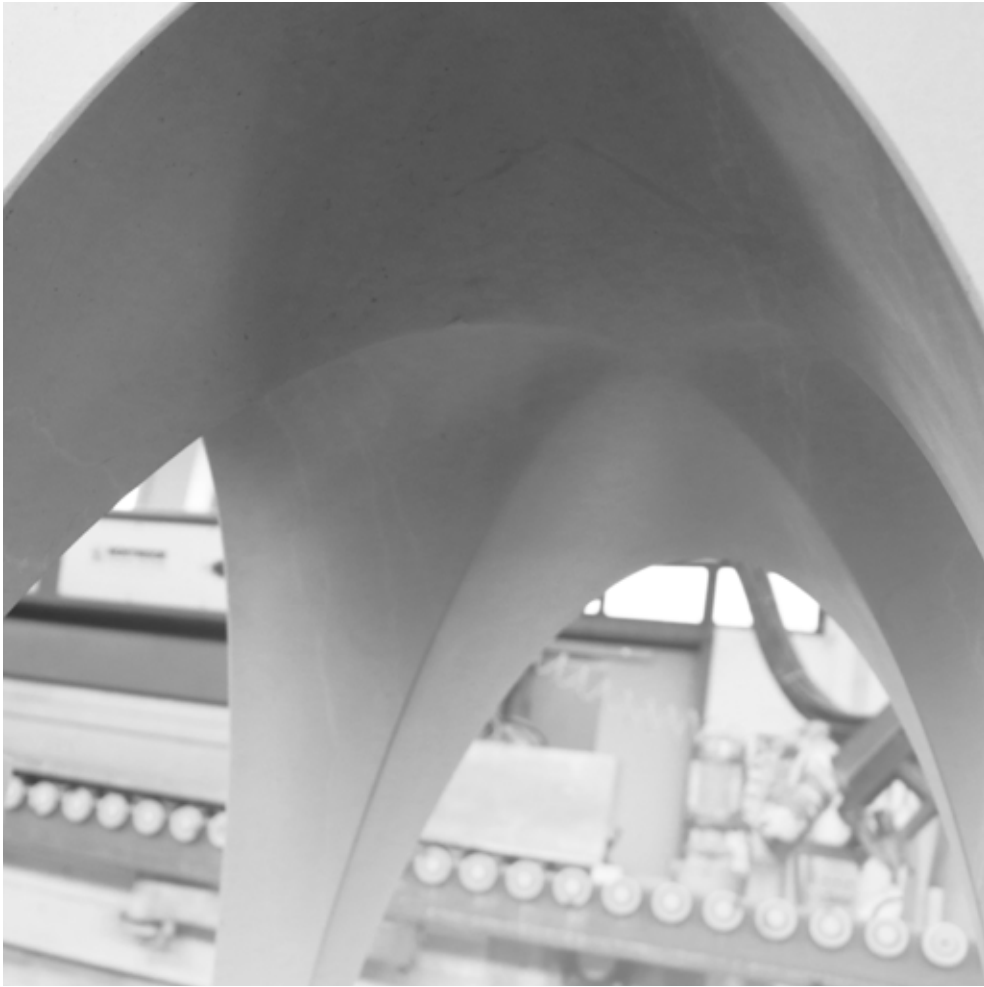
Machine



Artisan



Rib vault



Filigree



Haptic perception



Dialogue









Works with and at Max Dudler

1. Stadtsilhouette, San Severo 2016-17
2. Casa Wipfler, Mannheim 2015-17
3. Visitor Centre Heidelberg Castle 2010-12
4. Sattelkammer Heidelberg Castle 2014-17
5. Reconstruction of Hambach Castle, Neustadt an der Weinstrasse 2005-10
6. Extension of Hambach Castle, Neustadt an der Weinstrasse 2010-12
7. Entrance Building of Hambach Castle, Neustadt an der Weinstrasse 2012-14
8. Beeskow Castle 2013-15
9. Sparrenburg Visitor Centre, Bielefeld 2013-14
10. Johannisberg Park Info Point, Bielfeld 2013-14
11. Coach House of Cantzheim, Trier 2013-17
12. Orangery of Cantzheim, Trier 2013-17



1



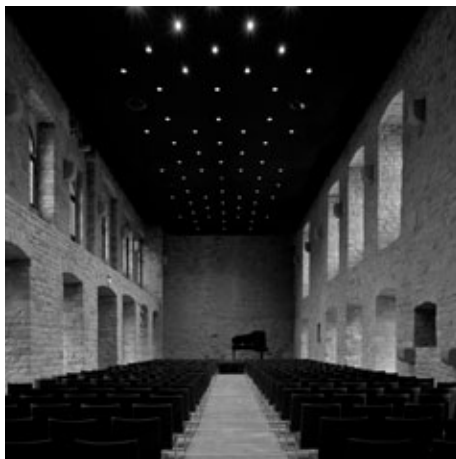
2



3



4



5



6



9



10



8



7



11

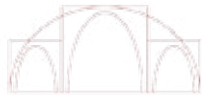


12

SIMONE BOLDRIN



Simone Boldrin was born in Padua in 1975. He studied architecture at the Istituto Universitario di Architettura in Venice, taking a degree in 2002 under the guidance of Serena Maffioletti and Roberto Sordina. In 1999-2000 he studied at Technische Universität Dortmund. In 2003 he began working with the studio of Max Dudler in Berlin. After about one year he became project manager for the restoration and extension of Hambach Castle, from the first competition phase to the construction, followed by projects for the castles of Heidelberg and Sparrenburg and for Cantzheim, and many other works. Since 2006 he has combined his professional activity with teaching positions in different architecture schools, including Cesena, Venice and Milan. He has curated a traveling exhibition on Dudler's work, shown in Italy, Switzerland and Germany. Together with F.S. Fera, he is the author of the monograph *Max Dudler architectures since 1979* published by Electa in 2012.



Photograph Credits

Andreslebedev: p. 4

Camilla Pini: pp. 12-23

Tiziana Fontana: pp. 26-27

Domenico Potenza: pp. 24-25

Stefan Müller: pp. 29-31

© All rights reserved. Any reproduction,
even partial, of text or images.

heliosautomazioni.com